



Westfjords Way Challenge

June 30 Saltverk Stage Two

→ Race Week Guide



SALTVERK

The second stage of the Arna Westfjords Way Challenge is sponsored by [Saltverk](#) – a local Westfjords company that uses a centuries-old method to make sustainable, hand harvested, high quality sea salt products.

They are headquartered in the geothermal area of Reykjanes, and since geothermal energy is the sole energy source used, during the whole process they leave zero carbon footprint on the environment.

Saltverk Sea Salt embodies calmness reminiscent of the location of its tranquil production surroundings. It is used in many of the best restaurants and in the homes of food enthusiasts around the world.

Saltverk Stage Two

June 30, Hotel Laugarhóll to Vogur Country Lodge

245km [152 mi] 2,355 m [7,725 ft]. 30% unpaved.

Stage 2 starts on June 30 at Hotel Laugarhóll and ends at Vogur Country Lodge in Fellströnd. The gravel and the elevation gain both pick up with this long tour of the eastern coast of the Westfjords. You will enjoy some of the best gravel of the Westfjords. The route seamlessly switches between gravel and tarmac as you travel in and out of the fjords.



Saltverk Stage Two

June 30, Hotel Laugarhóll to Vogur Country Lodge

- Saltverk Stage 2 begins with breakfast at Hotel Laugarhóll.
 - Breakfast will be available from 5am to 8am and will include oatmeal, a selection of meat, cheeses, and bread, and Arna lactose-free and vegan products. Grab a Hreysti Batterí sports drink before hitting the road.
 - **Please note that anyone not registered as a racer or volunteer will need to purchase their breakfast.** The cost for each person is 1.500 isk and payment should be made to the accommodation.
- The Reiðhjólaverzlunin Berlin bag transport bag will be parked near the start. Drop off your one bag here.
- Timing for Stage 2 begins as you turn onto the main road from the Hotel Laugarhóll driveway.
- Both museums listed in the Cultural Connections below offer coffee and cafe food. You can also fill up at the cafe in Borðeyri. There is also a grocery store in Buðardalur but is not included as a CC.
- If you plan to visit the donation based hot pots, please plan on carrying cash to donate. There is no suggested donation amount but anything between 100 and 1.000 isk is reasonable.





Saltverk Stage Two. Cultural Connections.



CC6 Drangsnes Seaside Hot Pots

Kilometer 20.3 [Mile 12.6]

The hot natural pools in Drangsnes are right along the shoreline in the middle of the village easily spotted from the road. The pots are used throughout the year by locals and visitors. There is a public shower/ changing room across the street.

Type

Hot pot

Hours

Always open

Price

Donations accepted
(cash only)

Directions

Just off the road on the left, can't miss them!



CC 7 Museum of Witchcraft and Sorcery Kilometer 52.0 [Mile 32.3]

The Museum of Sorcery and Witchcraft depicts the history of sorcery, which was very active here on the Strandir coast in the 17th century. The exhibition is not for the faint-hearted, as it details witchcraft cases throughout Iceland's history along with disturbing images and replicas of different witchcraft like the famous 'necropants.'

After a short tour of the museum, you can look through a small library of books on the topic, and stop in the cafe for a bite to eat before heading back out to the race! Note that there is a grocery store in Hólmavík that may be used for resupply if needed at this CC (hours 9 AM to 7 PM).

Type

Museum/ Cafe

Hours

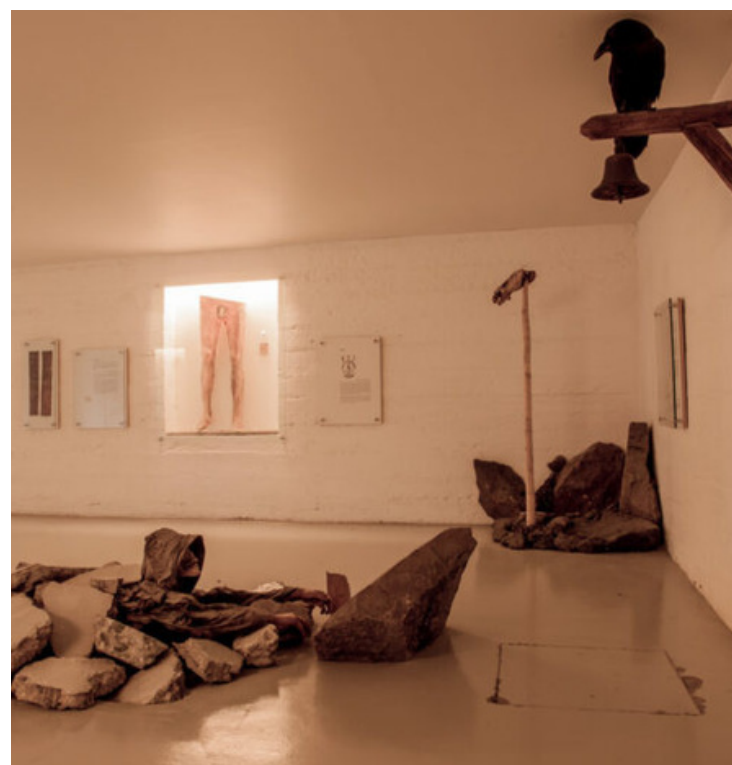
8:00-18:00 (opening early for the race)

Price

1,200 ISK

Directions

Take a left at the CC flag and follow the main road all the way to the harbor (approx. 1.6 km)



CC 8 Sheep Farming Museum

Kilometer 62.3 [Mile 38.7]

The Sheep Farming Museum is an interesting exhibition about the Icelandic sheep and sheep farming. At the museum, you will get to know all about the Icelandic sheep and how they were vital to Icelanders survival here through the centuries. Walk through a short exhibit and feed lambs from a bottle! Afterwards, enjoy the cosy coffee bar with local baked bread and pastries.

Type

Museum/ Cafe

Hours

10:00-18:00 [race is confirming summer opening times]

Price

500 ISK

Directions

Right off the road to your left!



CC 9 Borðeyri

Kilometer 152.4 [Mile 94.7]

Borðeyri is one of Iceland's smallest villages and is found on the western side of Hrútafjörður fjord. The village is mentioned in historical texts and was for a long time an important trading center for the surrounding communities. Today the village comprises of a elementary school, garage and the guesthouse Tangahús. One of the oldest buildings in the region is found in Borðeyri, Riis Hús, which was built in 1862. The building itself has been renovated to its original glory and plays an important role in the character of the village. You may want to stop by the cafe for some fuel before climbing the next mountain pass!

Type

Village/ Cafe

Hours

TBA [race is confirming summer opening times]

Price

Varies

Directions

Go straight at the CC flag (instead of turning right on the race route) and you will see the village on your left (approx. 2.5 kilometers)



CC 10 Vínlandssetur – The Leif Eiriksson Center Kilometer 189.9 [Mile 118]

The Leif Eiriksson center is an exciting destination for all ages, where stories of the voyages of Eric the Red and his son Leif the Lucky (also called Leifur Eiríksson), discovering parts of Greenland, Canada and the US, are presented in a new exhibition, consisting of works from ten renowned Icelandic visual artists. An audio guide will lead you through the history as you view the magical world of the exhibition. Afterwards you can enjoy a quick bite to eat or some good coffee on the ground floor.

Type

Museum/ Cafe

Hours

12:00-21:00

Price

2,500 ISK

Directions

Turn into town at the CC flag and follow Miðbraut street down towards the water.



CC 11 Hólar Farm

Kilometer 207.6 [Mile 129]

Hólar farm is a small family operated animal-rescue. Here, you can explore the farm and meet a variety of animals including horses, dogs, cats, rabbits, ducks, sheep, chickens, turkeys, goats, a pig and even a talking raven, who is world famous for being in the Netflix serie "KATLA." All admission payments go directly to helping the animals! Expect some sort of delicious surprise if visiting this CC!

Type

Farm/Petting Zoo

Hours

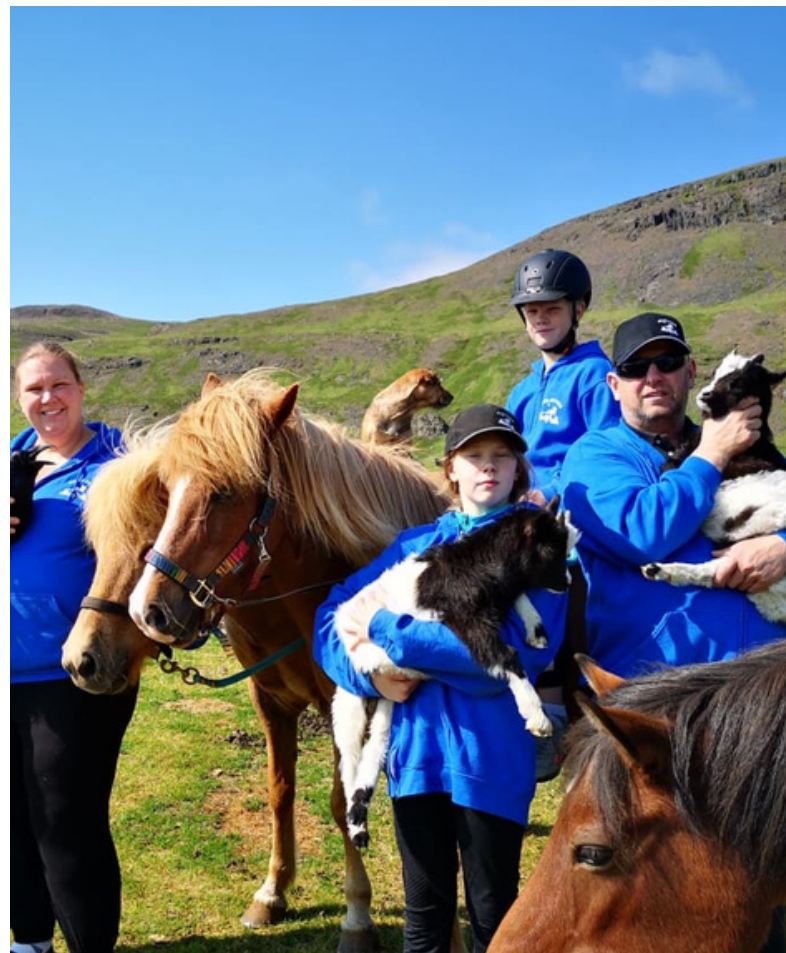
Open as dot watching indicates

Price

1,500 ISK

Directions

Just off the route to the right!



Saltverk Stage Two Finish

Vogur Country Lodge [Km 245 /Mile 152]

Timing for Stage 2 ends as you enter the driveway of Vogur Country Lodge

Dinner will be served starting at 7pm and be available until everyone is full. Riders can relax at the end of the day in the hot tub, sauna, and dining hall. Unbroken recovery tablets will be available to start the recharging process.

Camping Note: There is only one shower and toilet near the campground/hot tub/suana area for campers, but the doors to the main lobby and bathroom near the hot tub/ sauna will remain open overnight to use the restrooms. Bikes can be stored under the main deck with the entrance near the hot tub area.

Dinner Menu

The dinner menu (free with rider registration) is subject to change, but is currently set to be: one-pot red lentil and sweet potato curry with kale, served with whipped coconut lime cream, naan bread and salad.

Please note that anyone not registered as a racer or volunteer will need to purchase their dinner. The cost for each person is 3.600 isk and payment should be made to the accommodation.

